

High Productivity Cooking Electric Tilting Braising Pan, 90lt, Hygienic Profile, Freestanding

ITEM # _____
 MODEL # _____
 NAME # _____
 SIS # _____
 AIA # _____



586148 (PFET09ECE0)

Electric tilting Braising Pan
90lt (h) with compound
bottom, GuideYou panel,
freestanding

Short Form Specification

Item No. _____

AISI 304 stainless steel construction. GN compliant pan size; 18mm thick pan bottom (15mm mild steel and 3 mm AISI 316 stainless steel). Insulated and counterbalanced lid. Motorized tilting with variable speed control. Pan can be tilted beyond 90° to completely empty the food. The electric heating elements are mounted under the well. Safety thermostat protects the pan from overheating. A precise, electronic control of pan bottom temperature ensures fast reaction and exact adherence to preselected cooking temperatures between 50° and 250°C. TOUCH control panel. SOFT function. Possibility to store recipes in single or multiphase cooking process, with different temperature settings. Built in temperature sensors for precise control of cooking process. IPX6 water resistant. Configuration: Free-standing or Standing against a wall. Installation options (not included): floor mounted on 200mm high feet or a plinth which can be either steel or masonry construction.

Main Features

- Pan size is GN compliant.
- Easy to clean cooking surface due to large-radius edges and corners.
- Thermoblock heating system for optimal temperature distribution and high temperature stability.
- Pan bottom with two individually adjustable heating zones, each with a temperature sensor.
- IPX6 water resistant.
- Temperature sensors provides efficient temperature control: the power is supplied as and when required to keep the set temperature value without exceeding it.
- Optimum heat distribution in the food provides best cooking results in terms of taste, colour and consistency and in terms of vitamin preserving.
- Motorized, variable pan tilting with "SOFT STOP". Tilting and pouring speeds can be precisely adjusted. Pan can be tilted over 90° to facilitate pouring and cleaning operations.
- Built in temperature sensor to precisely control the cooking process.
- No overshooting of cooking temperatures, fast reaction.
- USB connection to easily update the software, upload/download recipes and download HACCP data.
- Multifunctional cooking appliance used for roasting, pot-roasting, braising, simmering, boiling and steaming.

Construction

- External panelling and internal frame made of 1.4301 (AISI 304) stainless steel.
- Multipurpose non-stick cooking surface in 18 mm thick compound: 3 mm shot-blasted 1.4404 (AISI 316L) stainless steel surface, seamlessly welded to the mild steel bottom.
- Double-lined insulated lid in 1.4301 (AISI 304) stainless steel mounted on the cross beam of the unit, counterbalanced by a hinge that remains open in all positions.
- 15 mm thick heating layer concealed below the entire pan bottom, to provide high thermal diffusion and heat storage properties.
- Water mixing tap is available as optional accessory to make water filling and pan cleaning easier.
- Heatproof handle with non-slip surface.
- Front-mounted inclined led "TOUCH" control panel with recessed deep drawn casing, features self-explanatory display functions which guide operator throughout the cooking

APPROVAL: _____

process: simultaneous display of actual and set temperature as well as set cooking time and remaining cooking time; real time clock; "SOFT" control for gentle heating up for delicate food; 9 power simmering levels from gentle to heavy boiling; timer for deferred start; error display for quick trouble-shooting.

- Possibility to store recipes in single or multiphase cooking process, with different temperature settings.
- Minimised presence of narrow gaps for easier cleaning of the sides to meet the highest hygiene standards.
- Can be prearranged for energy optimisation or external surveillance systems (optional).
- 98% recyclable by weight; packaging material free of toxic substances.
- Lateral surface of the vessel in DIN 1.4301/AISI 304.

User Interface & Data Management

- Connectivity ready for real time access to connected appliances from remote and data monitoring (requires optional accessory - contact the Company for more details).

Sustainability



- High-quality thermal insulation of the pan saves energy and keeps operating ambient temperature low.

Optional Accessories

- Strainer for dumplings for all tilting & stationary braising and pressure braising pans (except 80lt) and for all stationary rectangular and 100lt round boiling pans PNC 910053 ☐
- Scraper for dumpling strainer for boiling and braising pans PNC 910058 ☐
- Perforated container with handles 1/1GN (height 150mm) for boiling and braising pans PNC 910212 ☐
- Stainless steel plinth for tilting units - against wall - factory fitted PNC 911425 ☐
- Stainless steel plinth for tilting units - freestanding - factory fitted PNC 911455 ☐
- Small perforated shovel for braising pans (PFEN/PUEN) PNC 911577 ☐
- Small shovel for braising pans (PFEN/PUEN) PNC 911578 ☐
- Bottom plate with 2 feet, 200mm for tilting units (height 700mm) - factory fitted PNC 911930 ☐
- C-board (length 1200mm) for tilting units - factory fitted PNC 912184 ☐
- MOBILE KIT TxxT/PxxT (VAR.width=S-Code) PNC 912460 ☐
- Power Socket, CEE16, built-in, 16A/400V, IP67, red-white - factory fitted PNC 912468 ☐
- Power Socket, CEE32, built-in, 32A/400V, IP67, red-white - factory fitted PNC 912469 ☐

- Power Socket, SCHUKO, built-in, 16A/230V, IP68, blue-white - factory fitted PNC 912470 ☐
- Power Socket, TYP23, built-in, 16A/230V, IP55, black - factory fitted PNC 912471 ☐
- Power Socket, TYP25, built-in, 16A/400V, IP55, black - factory fitted PNC 912472 ☐
- Power Socket, SCHUKO, built-in, 16A/230V, IP55, black - factory fitted PNC 912473 ☐
- Power Socket, CEE16, built-in, 16A/230V, IP67, blue-white - factory fitted PNC 912474 ☐
- Power Socket, TYP23, built-in, 16A/230V, IP54, blue - factory fitted PNC 912475 ☐
- Power Socket, SCHUKO, built-in, 16A/230V, IP54, blue - factory fitted PNC 912476 ☐
- Power Socket, TYP25, built-in, 16A/400V, IP54, red-white - factory fitted PNC 912477 ☐
- Panelling for plinth recess (depth from 70 to 270mm) for tilting units - factory fitted (Deutschland, Austria, Switzerland) - factory fitted PNC 912479 ☐
- Additional panelling plinth for tilting units (width 120mm) - factory fitted (Deutschland, Austria, Switzerland) PNC 912486 ☐
- Connecting rail kit for appliances with backsplash, 900mm PNC 912499 ☐
- Connecting rail kit, 900mm PNC 912502 ☐
- Rear closing kit for tilting units - against wall - factory fitted PNC 912704 ☐
- Suspension frame GN1/1 for tilting braising pans PNC 912709 ☐
- Automatic water filling (hot and cold) for tilting units - to be ordered with water mixer - factory fitted PNC 912735 ☐
- Kit energy optimization and potential free contact - factory fitted PNC 912737 ☐
- Rear closing kit for tilting units - island type - factory fitted PNC 912744 ☐
- Lower rear backpanel for tilting units with or without backsplash - factory fitted PNC 912768 ☐
- Mainswitch 25A, 4mm² - factory fitted PNC 912773 ☐
- Spray gun for tilting units - freestanding (height 700mm) - factory fitted PNC 912776 ☐
- Food tap 2" for tilting braising pans (PUET-PFET) - factory fitted PNC 912780 ☐
- Emergency stop button - factory fitted PNC 912784 ☐
- Connecting rail kit: modular 90 (on the left) to ProThermic tilting (on the right), ProThermic stationary (on the left) to ProThermic tilting (on the right) PNC 912975 ☐
- Connecting rail kit: modular 80 (on the right) to ProThermic tilting (on the left), ProThermic stationary (on the right) to ProThermic tilting (on the left) PNC 912976 ☐
- Connecting rail kit for appliances with backsplash: modular 90 (on the left) to ProThermic tilting (on the right), ProThermic stationary (on the left) to ProThermic tilting (on the right) PNC 912981 ☐
- Connecting rail kit for appliances with backsplash: modular 90 (on the right) to ProThermic tilting (on the left), ProThermic stationary (on the right) to ProThermic tilting (on the left) PNC 912982 ☐

- 1 basket 1/1 GN for 40lt pasta cooker, PNC 913134 ☐
ProThermetic braising and pressure
braising pans, GN compatible (to be
combined with suspension frame)
- Scraper without handle for braising PNC 913431 ☐
pans (PFEX/PUEX)
- Scraper with vertical handle for PNC 913432 ☐
braising pans (PFEX/PUEX)
- Mixing tap with drip stop, two knobs, PNC 913554 ☐
815mm height, 600mm swivelling
depth for PBOT/PFET - factory fitted
- Mixing tap with drip stop, two knobs, PNC 913555 ☐
815mm height, 450mm swivelling
depth for PBOT/PFET - factory fitted
- Mixing tap with drip stop, two knobs, PNC 913556 ☐
685mm height, 600mm swivelling
depth for PBOT/PFET - factory fitted
- Mixing tap with drip stop, two knobs, PNC 913557 ☐
685mm height, 450mm swivelling
depth for PBOT/PFET - factory fitted
- Mixing tap with two knobs, 520mm PNC 913567 ☐
height, 600mm swivelling depth for
PXXT- KWC - factory fitted
- Mixing tap with one lever, 564mm PNC 913568 ☐
height, 450mm swivelling depth for
PXXT- KWC - factory fitted
- Connectivity kit for ProThermetic PNC 913577 ☐
Boiling and Braising Pans ECAP -
factory fitted

Recommended Detergents

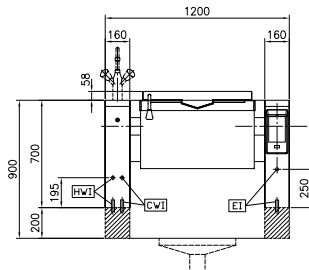
- C41 HI-TEMP RAPID DEGREASER, 1 PNC 0S2292 ☐
pack of six 1 lt. bottles (trigger incl.)



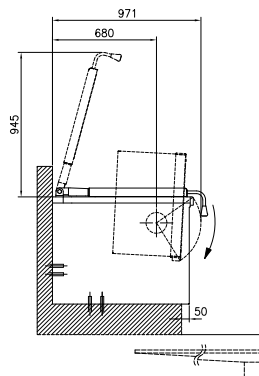
Electrolux
PROFESSIONAL

High Productivity Cooking Electric Tilting Braising Pan, 90lt, Hygienic Profile, Freestanding

Front

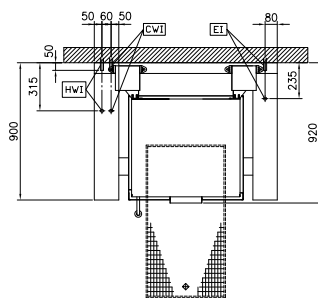


Side



CWI = Cold Water inlet 1 (cleaning)
EI = Electrical inlet (power)
HWI = Hot water inlet

Top



Electric

Supply voltage: 400 V/3N ph/50/60 Hz
Total Watts: 15.5 kW

Installation:

Type of installation: FS on concrete base; FS on feet; On base; Standing against wall

Key Information:

Working Temperature MIN: 50 °C
Working Temperature MAX: 250 °C
Vessel (rectangle) width: 680 mm
Vessel (rectangle) height: 237 mm
Vessel (rectangle) depth: 558 mm
External dimensions, Width: 1200 mm
External dimensions, Depth: 900 mm
External dimensions, Height: 700 mm
Net weight: 240 kg
Configuration: Rectangular; Tilting
Net vessel useful capacity: 75 lt
Tilting mechanism: Automatic
Double jacketed lid: ✓
Heating type: Direct



High Productivity Cooking
Electric Tilting Braising Pan, 90lt, Hygienic Profile, Freestanding

The company reserves the right to make modifications to the products without prior notice. All information correct at time of printing.

2025.12.09